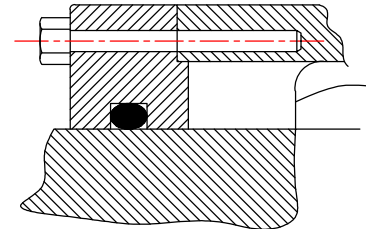
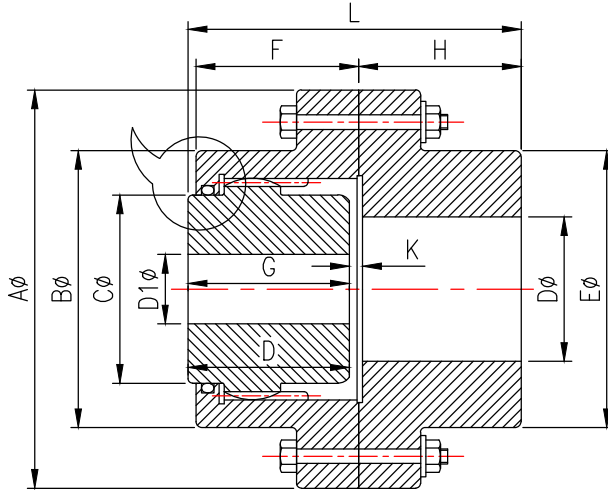


**Features :**

Standard half flexible gear coupling TYPE BHG cannot accommodate parallel misalignment used primary with floating shaft assemblies. Extensively use for cross traverse and long travel line shaft drives.



DETAIL : X  
THIS COVER PLATE CONSTRUCTION FOR SIZES BFG-105 ONWARDS

## Technical Data For Curved Tooth Flexible Half Gear Couplings

COUPLING SIZE BFG	LOAD CAPACITY		Max. R.P.M.	BORE			Approx Weight (Kg.)	MI GD <sup>2</sup> (Kg.-M)	DIMENSION IN M.M.								
	Torque in kgf-m	H.P.PER 100rpm		Max. D1	Max. D	Min.			Aφ	Bφ	Cφ	Eφ	F	G	H	L	K
101	107	15	6500	50	60	15	10	0.14	170	110	65	85	50	55	58	115	5
102	250	35	5200	60	75	20	15	0.20	185	125	85	110	62	70	72.5	145	5
103	451	63	4000	75	90	30	26	0.48	220	150	105	130	78	85	87.5	175	5
104	859	120	3400	90	110	35	40	0.95	250	175	130	160	96	105	107.5	215	5
105	1303	182	2900	110	130	40	60	1.90	290	200	155	185	100	110	115	230	10
106	2005	280	2600	125	150	45	85	3.00	320	230	175	215	117	125	130	260	10
107	3473	485	2200	140	170	50	120	5.25	350	260	205	240	134	140	145	290	10
108	4512	630	2000	160	200	60	180	8.50	380	290	230	285	147	155	160	320	10
109	5622	785	1800	180	220	70	210	15.00	430	330	250	315	156	165	170	340	10
110	8236	1150	1500	200	260	100	290	30.00	490	390	310	370	171	180	185	370	10

Bosoflex gear coupling are available in following execution :

- \* Mill motor type ; \* Spacer type ; \* Brake drum type ; \* Vertical type ; \* floating shaft type.
- Lubrication : Indian oil "servogem2" or any equipment grease is recommended.

Information required for coupling selection ;

- \* H.P. and R.P.M. to be transmitted
- \* Torque at transmitted rpm, both normal and maximum
- \*Types of driving and driven machines
- \* Nominal diameters & length of shaft for both driving and driven machines
- \* Usable shaft length, i.e. length of keys on both shaft. Dimensional details of finished bores and keyways, if required
- \* Installation arrangement—horizontal & vertical
- \* Any other detail as may be relevant to the selection of coupling.

### BOSON ENGINEERING

Engineers & Manufacturers

CONTACT US:

OFFICE : 4/19 G.T. ROAD (SOUTH) HOWRAH- 711101  
 MOBILE : 9830226942. PHONE : (033)2666 1263, FAX : (033)2666 2935,  
 e-mail : sales@bosonengg.com website : www.bosonengg.com