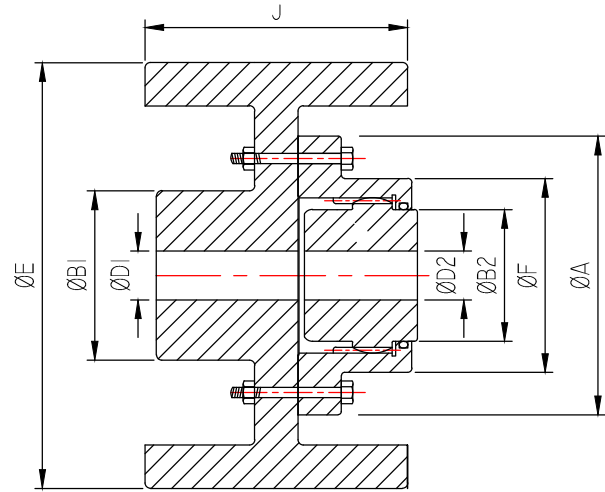


GEAR COUPLING WITH INTEGRAL DRUM



GEAR COUPLING WITH BOLTED DRUM

TECHNICAL DATA FOR GEAR COUPLING WITH INTEGRAL DRUM

DRUM DIA	COUPLING RATING		MAX SPEED	BORE		ØBD	W	ØB1	ØB2	L	WT IN KG	PRICE
	KW AT 100 RPM	RATED TORQUE		P.B	MAX							
100	10.27	981	8000	12	45	100.00	80	80	65	105	10	
140	10.27	981	6300	17	55	140.00	100	80	70	137	19	
150	25.67	2452	6300	17	55	150.00	100	80	70	137	22	
180	46.22	4414	5000	21	50	180.00	110	90	85	137	33	
200	87.32	8338	4000	20	85	200.00	110	120	120	137	47	
250	205.46	19620	3350	25	105	250.00	130	140	155	159	82	

TECHNICAL DATA FOR GEAR COUPLING BOLTED DRUM

DRUM DIA + COUPLING SIZE	COUPLING RATING		MAX SPEED RPM	BORE			ØA	ØB1	ØB2	C1	C2	ØE	ØF	G	J	M	N	WT IN KG	PRICE
	KW AT 100 RPM	RATED TORQUE (Nm)		MIN	MAX														
					D1	D2													
150-100	5.9	559	7600	10	40	30	120	65	50	63.5	45	150	75	1.5	80	55	39.5	11.5	
160=100A	5.9	559	7600	10	45	35	120	70	50	73.5	45	160	75	1.5	90	55	39.5	13.7	
200-101	11.8	1127	6300	20	55	45	170	90	65	76.5	55	200	110	2.5	100	65	49.0	23.5	
250-101A	11.8	1127	6300	20	65	45	170	105	65	76.5	55	250	110	2.5	120	65	49.0	34.2	
250-102	29.4	2803	5000	30	65	55	185	105	85	76.5	70	250	125	2.5	120	80	62.0	41.0	
300-103	52	5046	4000	40	80	70	220	130	105	104.5	85	300	150	2.5	150	105	78.0	64.5	
300-104	100	9556	3350	50	85	85	250	130	130	104.5	105	300	175	2.5	150	125	96.0	72.0	
375-104A	100	9556	3350	50	85	85	250	135	130	110.5	105	375	175	2.5	165	125	96.0	140.0	
400-104B	100	9556	3350	50	95	85	250	150	130	117.5	105	400	175	2.5	180	125	96.0	150.0	
400-105	153	14604	2800	60	105	105	290	150	155	115.0	110	400	200	5.0	180	140	106.0	160.0	
450-105A	153	14604	2800	60	150	105	290	170	155	120.0	110	450	200	5.0	200	140	106.0	178.0	
500-106	235	22440	2500	75	130	120	320	210	175	145.0	125	500	230	5.0	225	155	117.0	225.0	

BOSON ENGINEERING
ENGINEERS & MANUFACTURERS

CONTACT US:

OFFICE : 4/19 G.T. ROAD (SOUTH) HOWRAH- 711101
MOBILE : 9830226942. PHONE : (033)2666 1263, FAX : (033)2666 2935,
e-mail : sales@bosonengg.com website : www.bosonengg.com