

Service factor

Load	Driven Equipment	Prime Mover		
		Motor	or Hydraulic Reciproca	Turbine Drive ting Engine
Uniform	Centrifugal Pumps,Conveyors uniform loading,Exciters,Fans and Blowers,Light Duty Generators-uniform loading,Mixers-liquid.	1.00	1.10	1.25
Light Shock	Centrifugal Pumps,Generators, Pulsating Grinders,Hydraulic Pumps,Kilns,Line Crafting Machine tools,Oscillating Pumps, Textile Machinery,Woodworking Machinery	1.25	1.5	1.85
Medium Shock	Air Compressors Multi-Cylinder, Ball and Rod Mills,Cranes, Elevators and Hosists Punch, Presses,Reciprocating Pumps, Shares Ship Drives,Welding Generators	1.75	2.00	2.35
Heavy Shock	Air Compressors Single-Cylinder, Dredgers,Drilling Rings,Mining Machinery,Rolling Mill Drives, Rubber Mixers.	2.25	2.50	2.80
Extreme Shock	Ore Crushers,Barstock Shears Conveyors Vibrating.	2.75	3.25	3.75

BOSOFLEX TYPE COUPLING

Details required for coupling selection are
Power rating and speed of the driven machine

Type of drive and machine
Diameter of shaft to be connected

1 KW = 1.34 HP

SELECTION EXAMPLE :

A 12.48 HP Electric Motor at 1440 rpm coupled to a Centrifugal pumps subject to uniform load. Maximum shaft OD-42mm.

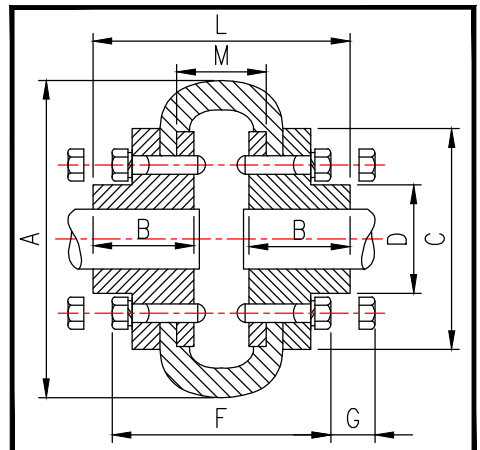
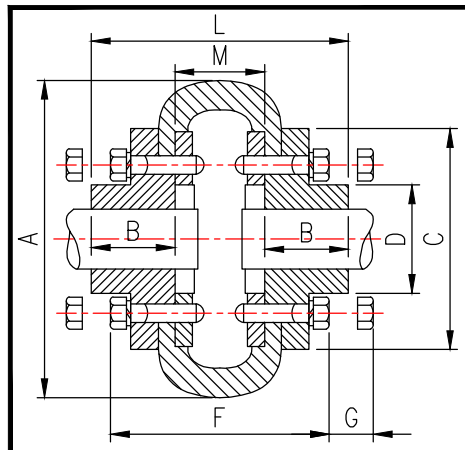
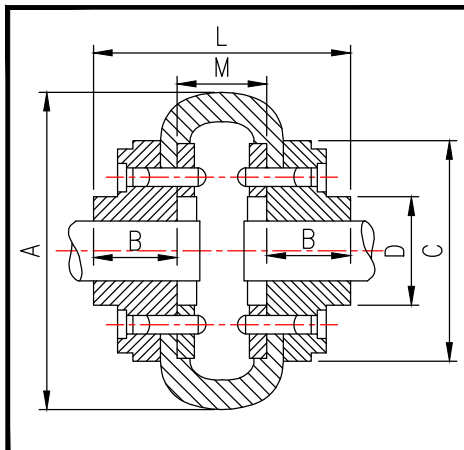
To Select a Coupling :

$$\text{Rating of Coupling} = \frac{\text{HP}}{\text{RPM}} \times 100 = \frac{12.48 \times 1 (\text{SF}) \times 100}{1440}$$

$$= 0.86 \text{ HP}/100\text{RPM}$$

CONSIDERING MAX BORE CAPACITY OF COUPLING

Recommended Coupling Size is - BF=60



SIZE	HPPER 100 RPM	TORQUE KGM	Max Speed Rev./min.	Bore		B mm	A mm	L mm	D mm	E mm	C mm	G mm	M+ mm	F mm	Approx Wts. (Kgs.)	Noofscrew andsize	
				Min mm	Max mm												
BF-40	0.9	6.5	4500	13	30	40	104	66	-	22	82	43	22	-	2.0	4	M5
BF-45	1.6	11.2	4500	13	32	45	120	74	-	25	94	43	24	-	2.2	4	M5
BF-50	2.3	16.3	4500	18	38	32	133	92	79	32	100	43	25	-	4.0	4	M5
BF-60	4.5	32.2	4000	18	48	38	165	112	73	38	125	43	33	-	5.0	5	M6
BF-70	6.9	49.6	3600	20	55	45	197	132	82	45	144	10	40	101	8.0	5	M6
BF-80	10.8	77.3	3100	26	65	51	211	149	95	51	167	10	43	106	12.0	6	M10
BF-85	13.0	93.3	3000	32	70	53	222	154	103	53	179	13	44	107	14.0	6	M12
BF-90	15.6	111.7	2880	32	76	57	235	164	110	57	188	13	46	119	15.0	6	M12
BF-100	21.6	154.6	2600	32	85	60	254	178	124	60	216	13	48	123	21.0	6	M12
BF-110	30.4	217.8	2300	32	90	65	279	180	134	65	133	14	44	127	28.0	6	M12
BF-120	50.5	361.6	2050	39	102	76	314	207	152	76	264	14	49	140	41.0	6	M12
BF-140	80.3	575.1	1800	76	120	89	359	204	195	89	311	14	24	152	61.0	8	M20
BF-160	133.0	352.0	1600	75	140	102	402	220	216	102	345	19	30	156	86.0	8	M20
BF-180	234.2	1677.4	1500	75	150	114	470	258	266	114	398	19	46	188	141.0	10	M20

BOSON ENGINEERING

Engineers & Manufacturers

CONTACT US:

OFFICE : 4/19 G.T. ROAD (SOUTH) HOWRAH- 711101

MOBILE : 9830226942. PHONE : (033)2666 1263, ALTER 6291250277

e-mail : k.basu@bosonengg.com, website : www.bosonengg.com